



Happy New Year!



From Your PASTORAL TEAM

Welcome back to the Spring term and Happy New Year to you all!! This term we really need to focus on attendance and punctuality. This is not a data exercise for us to get the % as high as possible, it's about ensuring all of our children receive the education that they are entitled to which will support them in reaching their full potential.

As a school we take your children's education very seriously and know that attendance below 97% can start to make an impact on your child's ability to reach their potential. So before you decide that a day off should be taken, please ask yourself **"are they really too ill to be in school?"** and if you are unsure then please send them in and we will keep an eye on them. If they do become ill in school, rest assured we will contact you to collect them.

Please try and make any appointments out of school time or if it is absolutely necessary then please ensure your child is in school before and/or after any appointment. If another member of the family has an appointment to attend, you must make alternative arrangements for someone to collect or bring your child to or from school.

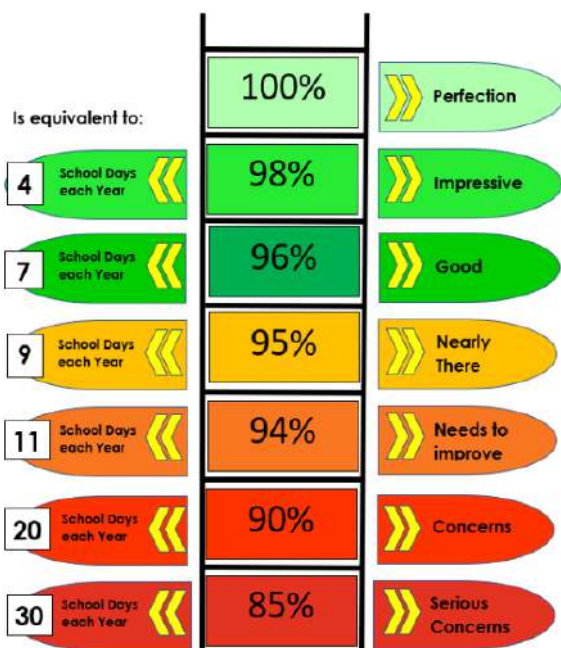
If your child really is too ill to attend school then please call us before 9am to let us know the reason for absence. If school have not had a message from you and we are unable to make contact then we may do a home visit, as part of our safeguarding duty of care. If we are still unable to ascertain the safety of a child we will ask social services or the police to follow up with a safe and well check.

DO YOU KNOW HOW MUCH TIME YOUR CHILD MISSES AND THE IMPACT THAT COULD HAVE?

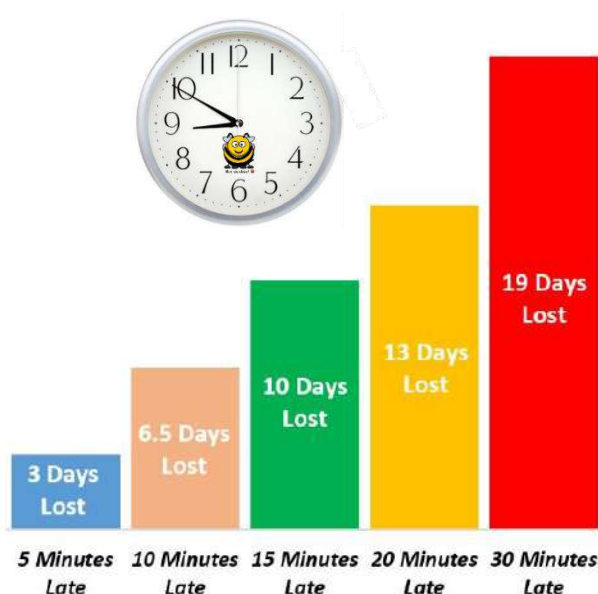
Please look at the tables below:



Attendance Ladder



How many days of learning will your child lose to lateness?



SCHOOL DAILY ROUTINES

Doors open at 8:45am ~ Children should be in class for 8:50am ~ Register starts to be taken at 8:55am

Gates close at 8:55am Any child arriving after this time is classed as late and will be marked with an 'L' on the register

Our registers officially close at 9:25am and any child arriving later than 9:25am will be marked as a 'U' (unauthorised late) and will count as an absence on their attendance percentage.

Being late into class can have a detrimental effect on children. Not only do they miss the social catch up with their friends but they can also miss the start of what they are being taught, depending on how late they are. Being on time can avoid any unnecessary embarrassment some children feel when walking into their class late, and ensure their day starts off as positively as possible.

EXTENDED LEAVE



We appreciate the challenges that some parents face if they have family living abroad and an emergency arises. However, please keep in mind that the school does not authorise holidays regardless of whether a contract has been completed or not unless there are proven exceptional circumstances, that has been authorised by the Head of School.

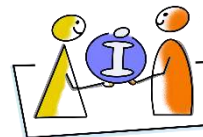
If you are planning to take your child abroad during time-term you must complete a leave request form. These can be collected from the school office.

Penalty Notices

So far this year there have been over **30 penalty notices** issued for non-school attendance. This has resulted in parents either receiving a fine or their case being heard in court.

The government have brought out new statutory guidance that school's now need to follow which can be viewed at [Working together to improve school attendance \(applies from 19 August 2024\)](https://www.publishing.service.gov.uk/government/uploads/system/uploads/attachment_data/file/123456/Working_together_to_improve_school_attendance.pdf) ([publishing.service.gov.uk](https://www.publishing.service.gov.uk))

Please refer to the letter sent out to you, and available to view via our website, explaining the changes.



The Welfare Hub is now up and running every week in the Arches. You will find the Pastoral team and the Inclusion team in there every Thursday from 9-10am, as well as coffee and biscuits!!

So if you need support with anything, or just want a chat then please drop in and see us, we have a wealth of information we can share with you.



The Pastoral Team host a coffee morning every half term throughout the year. Everyone is invited to come into school, share breakfast and have a catch up with each other, so whether you want to discuss school issues or just have a catch up with other parents please join us at these events. The dates we have in the diary at the moment are as follows, but please check the events calendar that comes out to you each term in case of any changes.

All of these events happen at 9am in the Junior Hall:

Friday 7th February 2025

Friday 4th April 2025 (EID & Mother's Day)

Friday 13th June 2025 (Father's Day)

We look forward to seeing you all there 😊